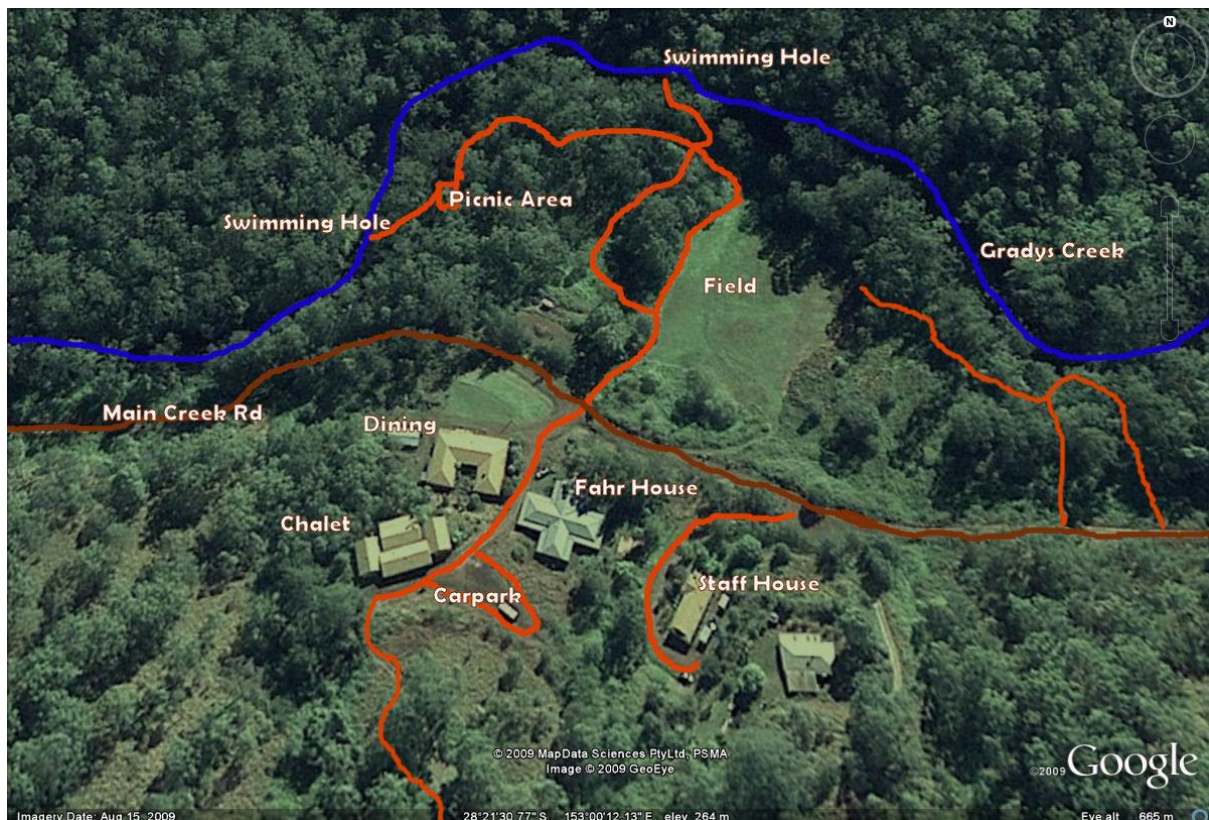




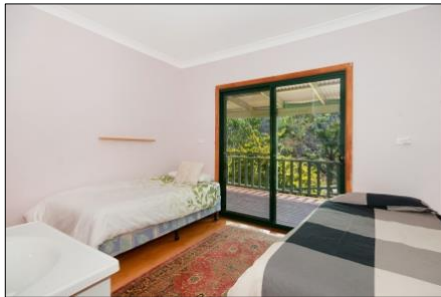
Our Facilities

An Overview of Sine Cera



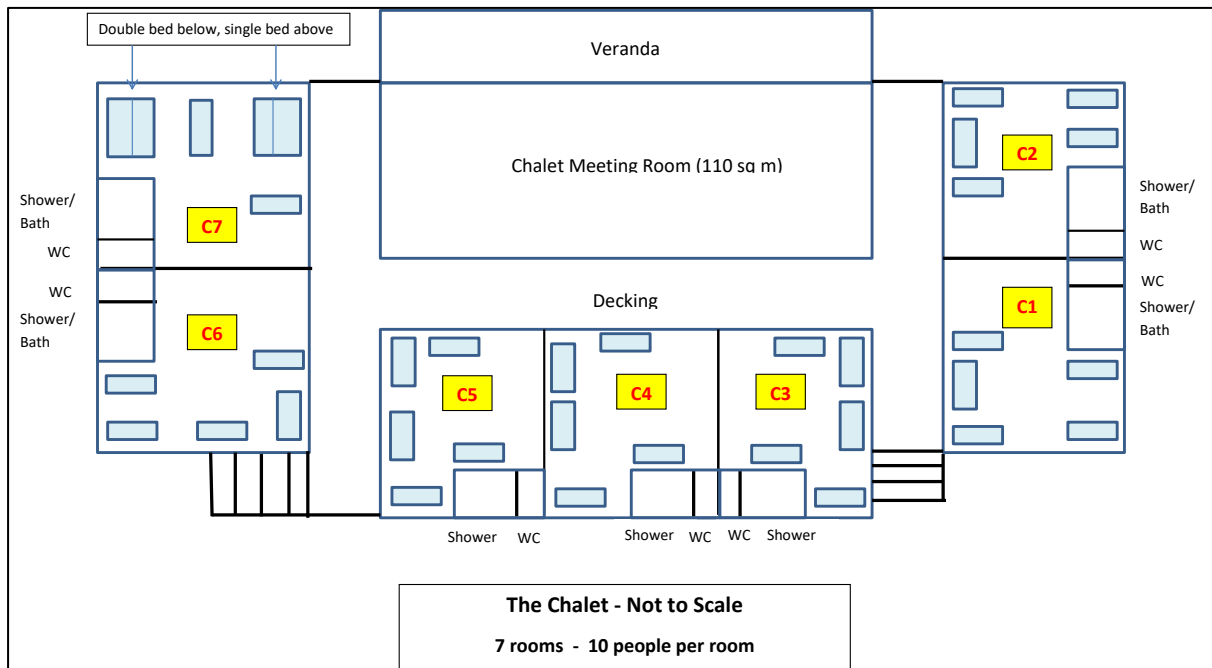
Fahr House

- twin share accommodation for 26 people in 13 rooms
- queen bed accommodation for 4 people in 2 rooms
- all rooms open on to verandas
- 8 large bathrooms
- air conditioned lounge – 80 m²
- mini kitchen - sink, microwave, bar fridge, toaster, hot water urn
- 55 inch flat screen tv & dvd player
- blue tooth sound system
- slow combustion fireplace
- infrared sauna for one person



The Chalet

- bunk accommodation for 70 people
- 7 rooms each with 10 bunks (5 double bunks)
- separate toilet and bathroom in each room
- verandas
- large lounge / meeting/ activity room - 100 m² - fully air conditioned – great views
- mini kitchen - sink, microwave, bar fridge, toaster, hot water urn



Linen:

We provide mattress covers, doonas, blankets and pillows. Guests are required to bring their own sheets and towels (for bathing and swimming). For interstate guests, linen can be provided at a cost of \$20 per person per week or part thereof.

Commercial Kitchen

- 1 walk-in cool room
- 1 walk-in freezer room
- 1 walk-in pantry
- 2 commercial gas stoves with ovens
- 1 deep freeze unit

- 1 commercial dishwasher
- 4 sinks
- 2 microwaves
- 1 food processor
- 2 toasters
- 2 large rice cookers
- 1 bain marie
- pots, pans, saucepans, baking trays
- cooking utensils
- crockery & cutlery for 100



Dining Room / Conference Room / Games Room

- very large space - 315 m²
- seating for over 100
- normally divided into dining area + games room but many possible layouts
- several pedestal fans
- large slow combustion fire place
- opens on to 27 m long veranda
- games room contains 1 table tennis table, 1 table soccer, 1 billiard table



Games & Sporting Equipment

Guests are welcome to bring their own games & sporting equipment, but we have the following:

- 1 table tennis table
- 1 table soccer
- 1 billiard table.

A cash deposit is required to use the above equipment. The deposit will be refunded when equipment is left in the same condition as it was found.

Walking Trails

There are several walking trails on the property. A map of these walking trails is given below.

There are also many walking trails and spectacular lookouts in the World Heritage listed Border Rangers National Park that adjoins Sine Cera. Access to the National Park is approximately 20 minutes away by car.

